



MOUNTAIN ACCORD

# Environment System

## Group Meeting #6

August 19, 2014



# Meeting #6 Agenda



1. Program Overview
2. Air Quality/Regional Haze Metric
3. Suitability Analysis Update
4. Mapping Exercise
5. Action Items and Closing

# Air Quality Metrics



**Goal 2: Protect and improve air quality for protection of public health, environmental health, and scenic visibility.**

Metric 1: Reduction in health related air pollutant emissions ~~Reduction in vehicle miles traveled in project area~~

*(as quantified by: vehicle miles travelled, acres of prescribed and wild fire burned, cords of fire wood sold, and mass transit ridership).*

# Air Quality Metrics



Metric 2: Minimize emissions of air pollutants that contribute to regional haze (i.e., reduce the clarity and color of scenic vistas)

*(as quantified by: days of visual smoke impact, acres of disturbed soils, degree of cooperation with intermountain regional haze planning targets).*



MOUNTAIN ACCORD

# Suitability Analysis Update



# What goes into the Suitability Analysis?



## **Constraints**

- Environmental/Geographic Factors
  - Slope, Visual Quality, Hydrology, Wetlands, Floodplains, Earthquake Faults, Avalanche Paths



## **Assets**

- Proximity to Road
- Proximity to Sewer



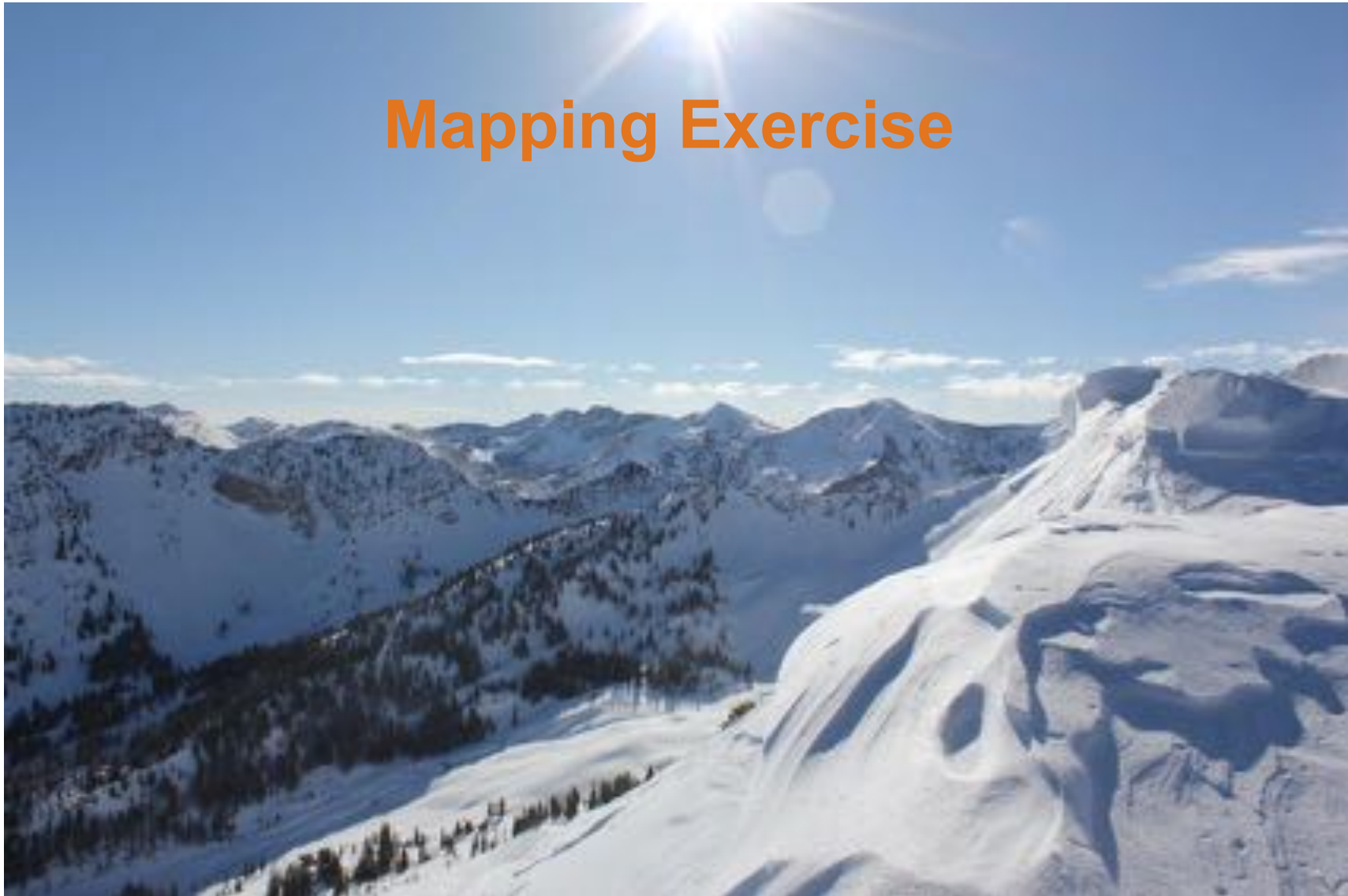
## **Land Status**

- Ownership
- Zoning



MOUNTAIN ACCORD

# Mapping Exercise



# Recent Activities

- Held four sub-group meetings last week:
  - Land
  - Ecosystems
  - Water
  - Climate Change
  
- Solicited input on an Environment Idealized System

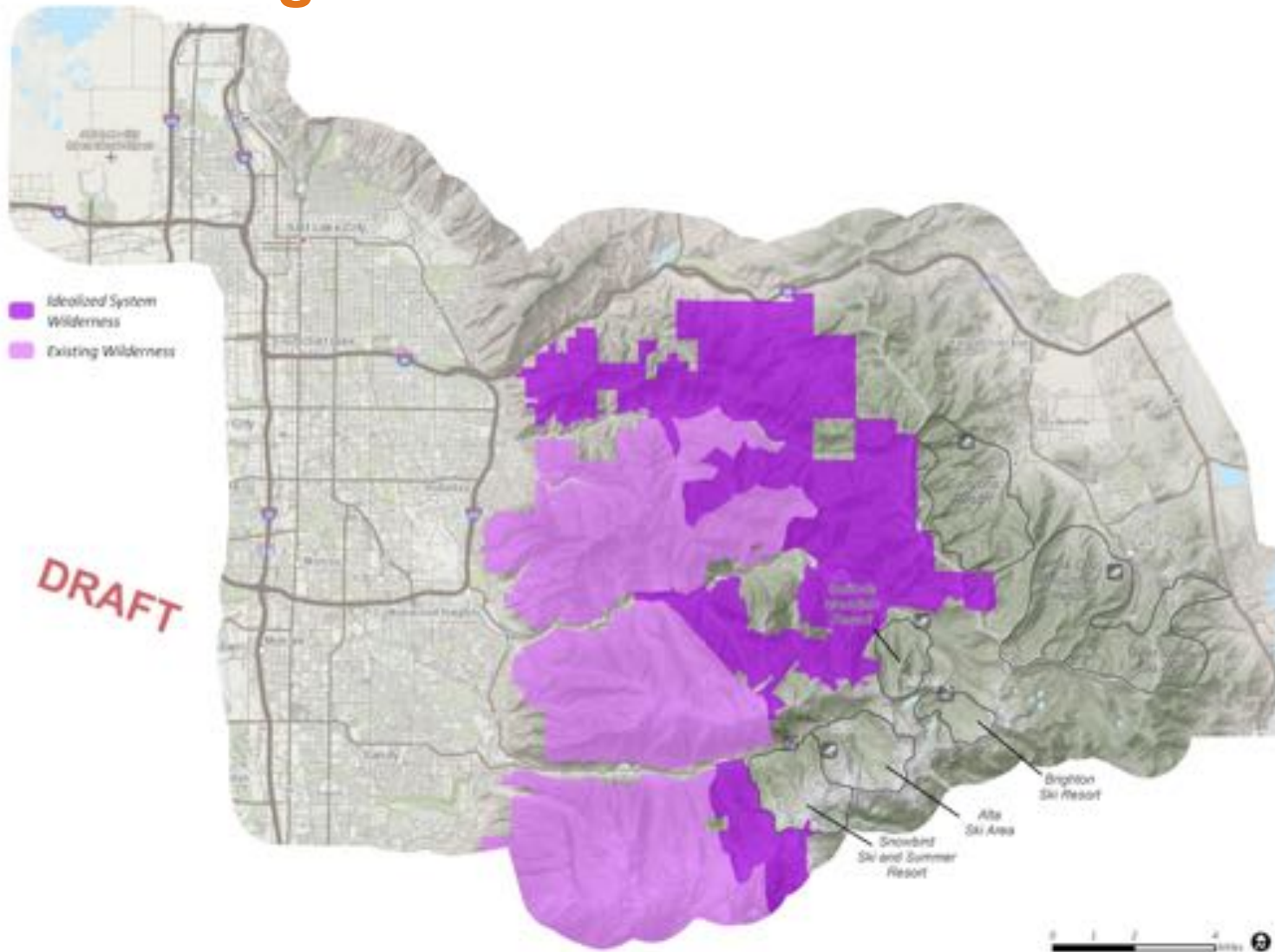




# Land—Wilderness Existing/Ideal



MOUNTAIN ACCORD

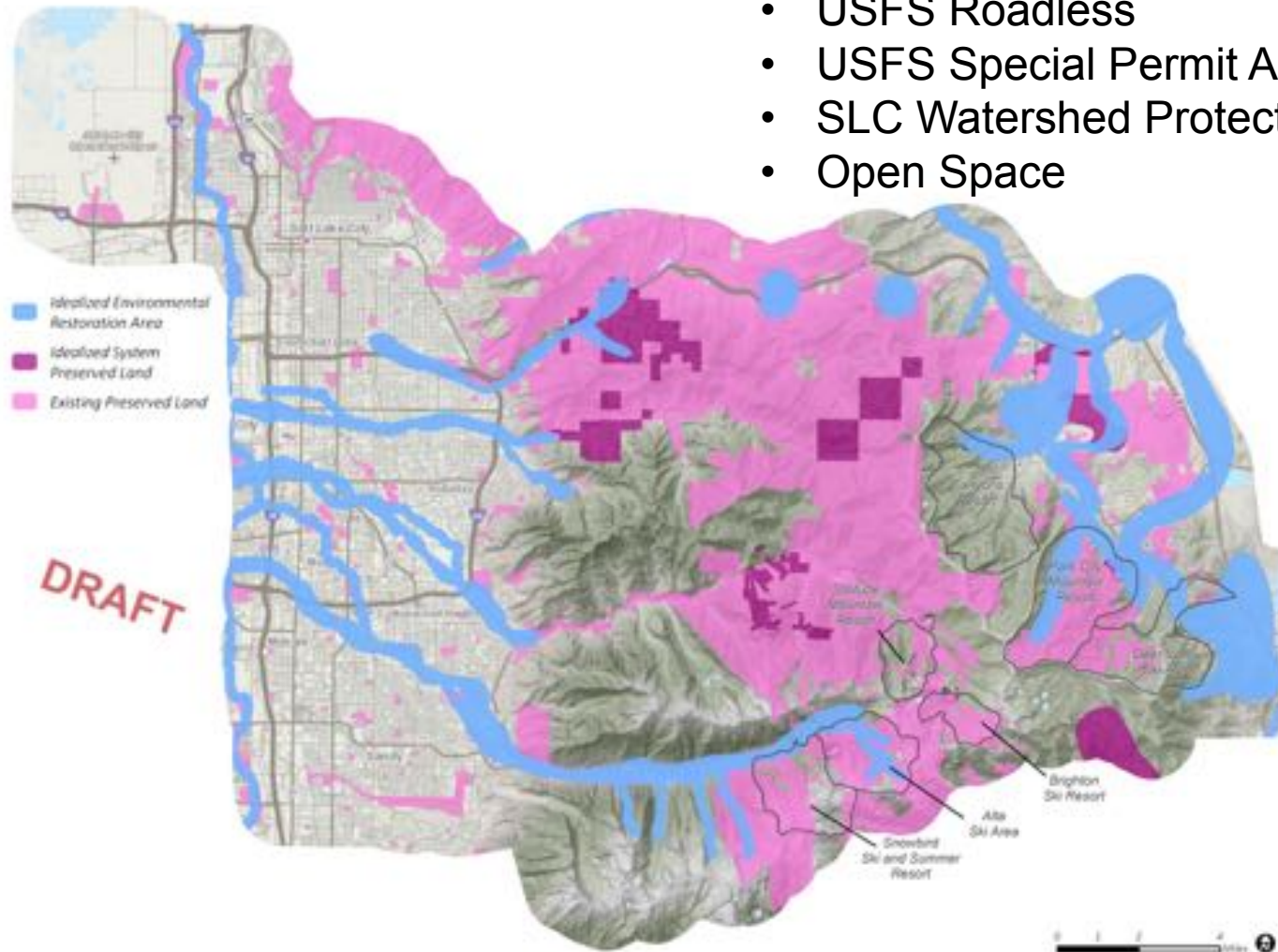


# Land—“Preserved” (existing/ideal) and Restoration ideal

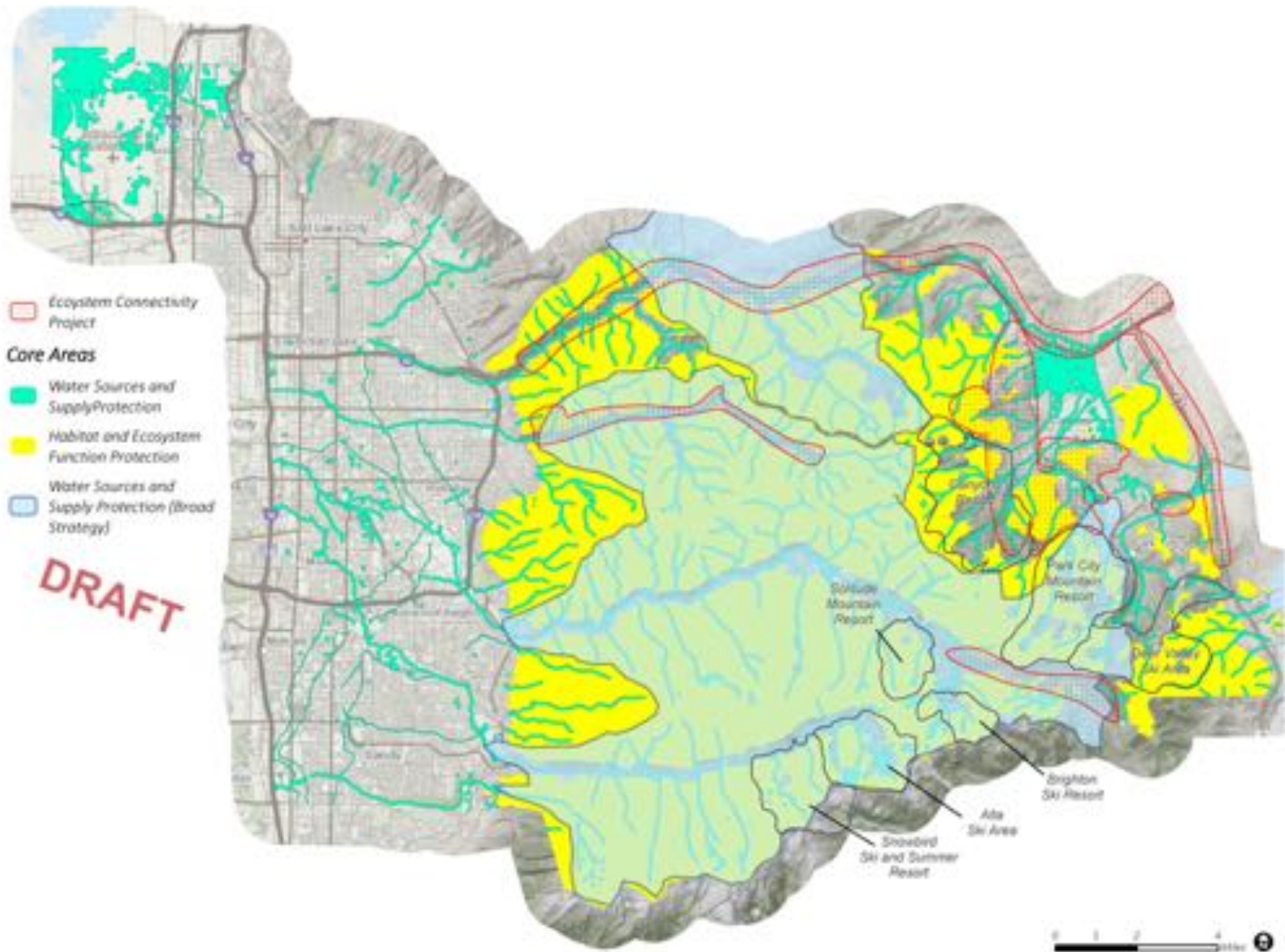


Existing (as shown) includes:

- USFS Roadless
- USFS Special Permit Areas
- SLC Watershed Protection Parcels
- Open Space



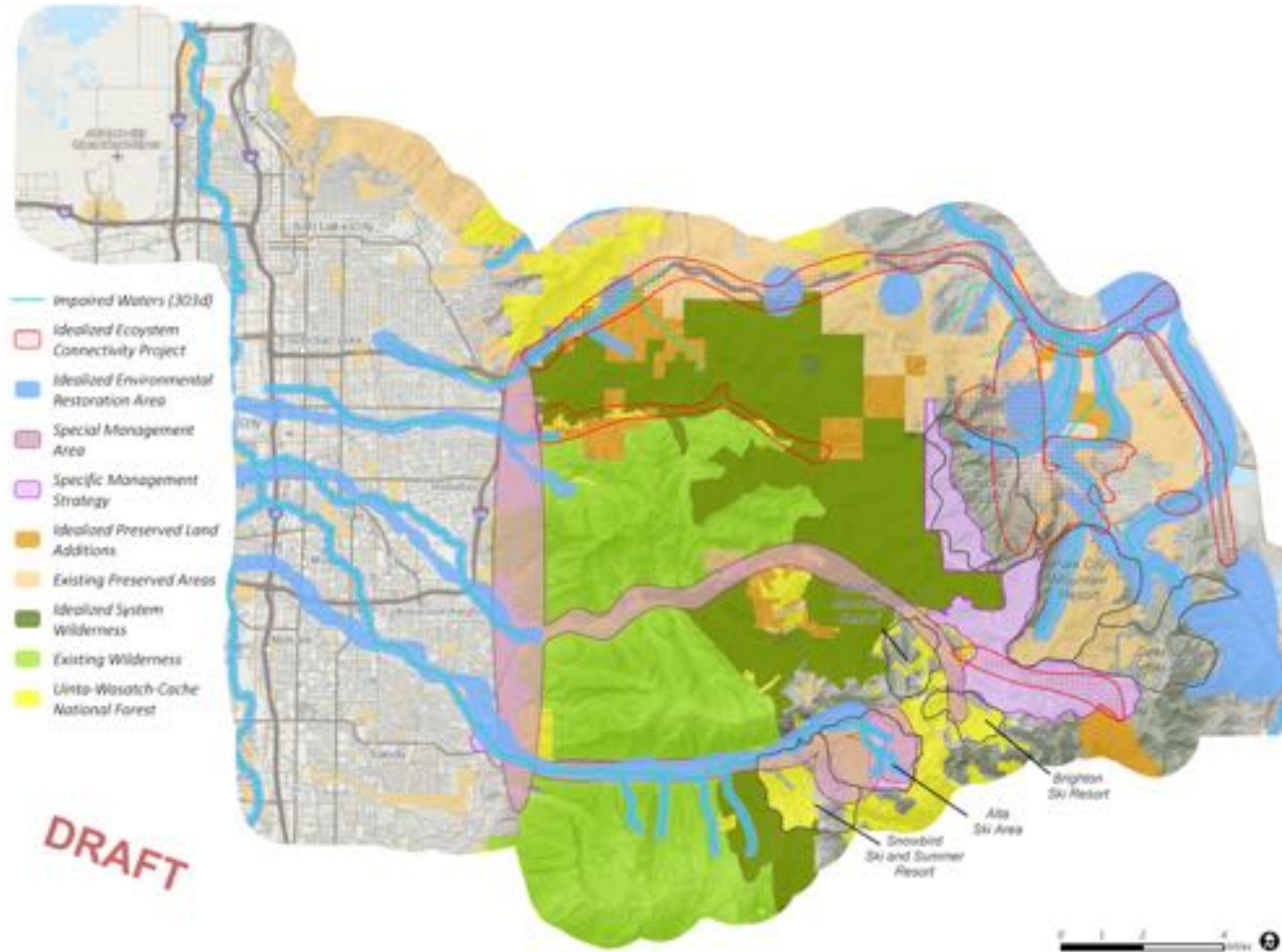
# Ecosystems/Water Existing (core areas) and Ideal Eco. Connectivity



# Combined Environment Conceptual Idealized Scenario



ORD



# Objectives for Mapping Exercise



MOUNTAIN ACCORD

## Important questions to consider in developing an idealized environment

- Within the context of each goal
- What have we missed? Corrections needed?
- Are there any elements that need clarifying?
- What key takeaway messages should we include in a narrative to accompany the Ideal Scenario to support the decision-making process?



## Next Meeting (#7)



Environment SG Meeting #7

**Tuesday September 23, 1:30-3:30PM**

**Miller Conference Center at the SLCC  
Sandy Campus**

- Refine Idealized Systems: Design Charrette #2