



MOUNTAIN ACCORD

Transportation System

Group Meeting #6

August 20th, 2014



Meeting #6 Agenda

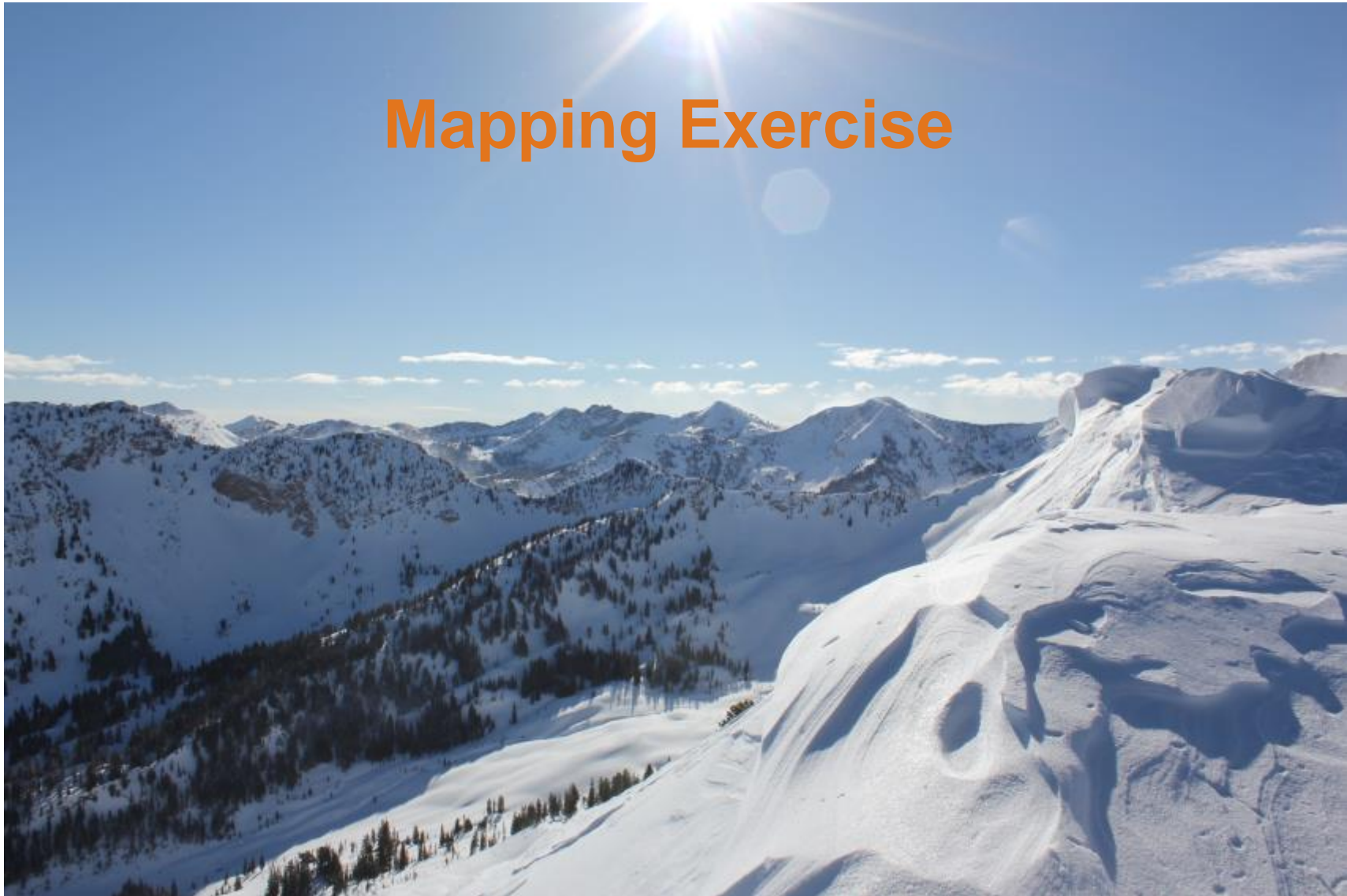


1. Welcome
2. Program Overview
3. Mapping Exercise
4. Action Items and Closing



MOUNTAIN ACCORD

Mapping Exercise



What We've Heard:



Workshop: July 31st – about 20 attendees (four tables)

Solicitation: Had four electronic submittals from the System Group

Common Themes from the Eight Submittals

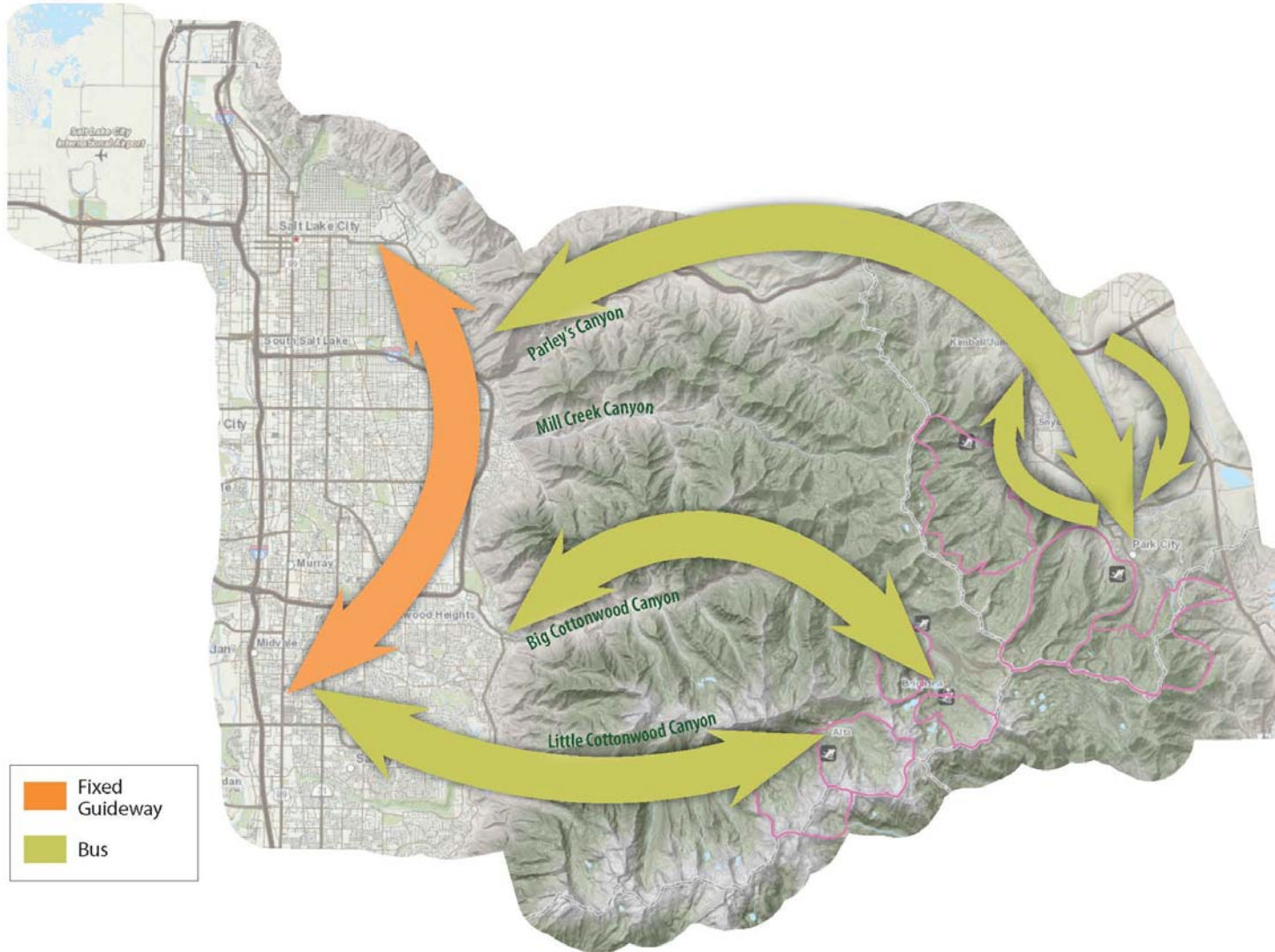
- **Parking improvements at canyon entrances, Kimball Junction, and Park City**
- **Transit identified on nearly all key corridors**
- **Five of eight identified connection between Cottonwoods and Summit County**

A Continuum of Choices:



MOUNTAIN ACCORD

Concept A

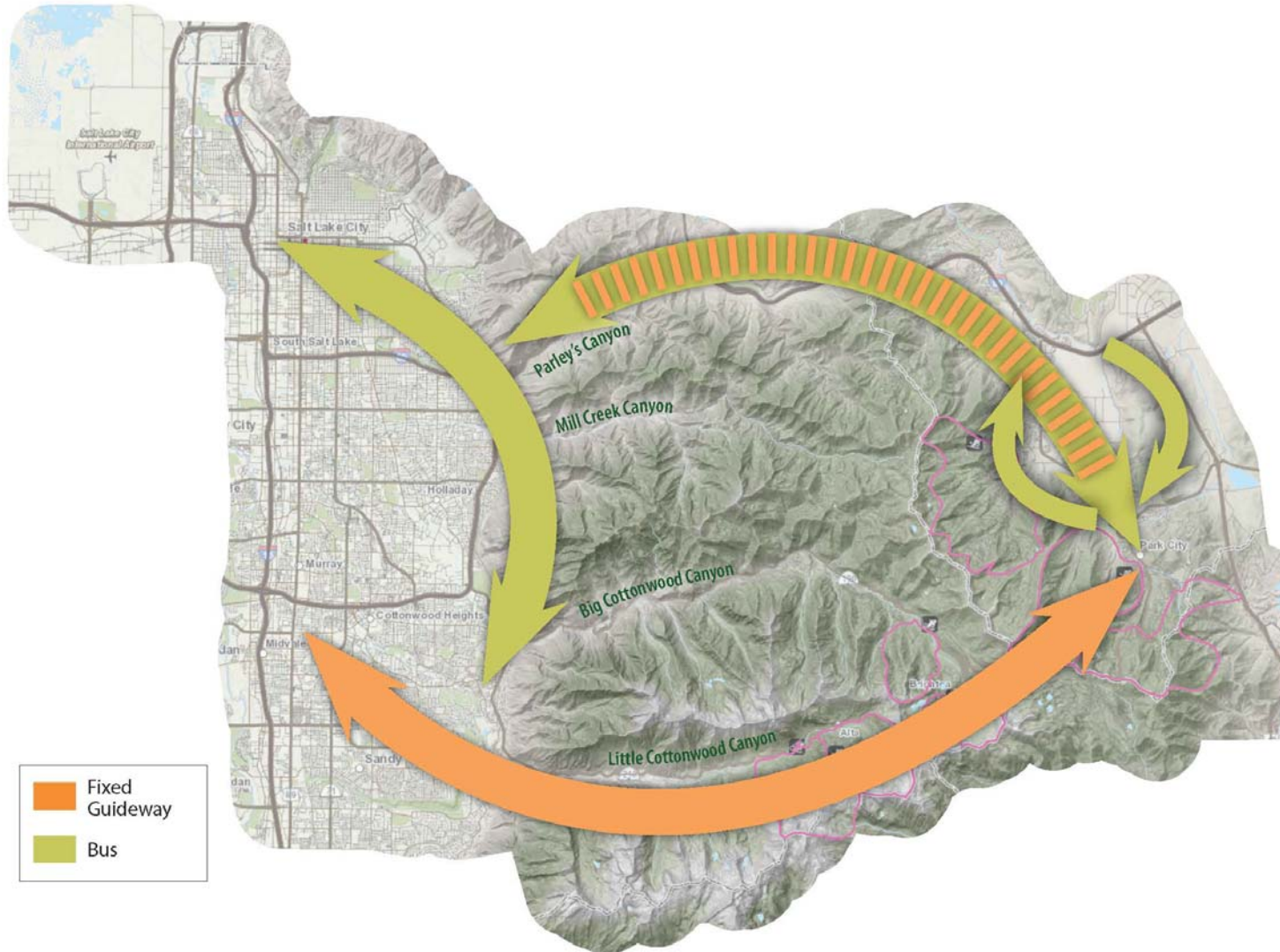


A Continuum of Choices:



MOUNTAIN ACCORD

Concept B

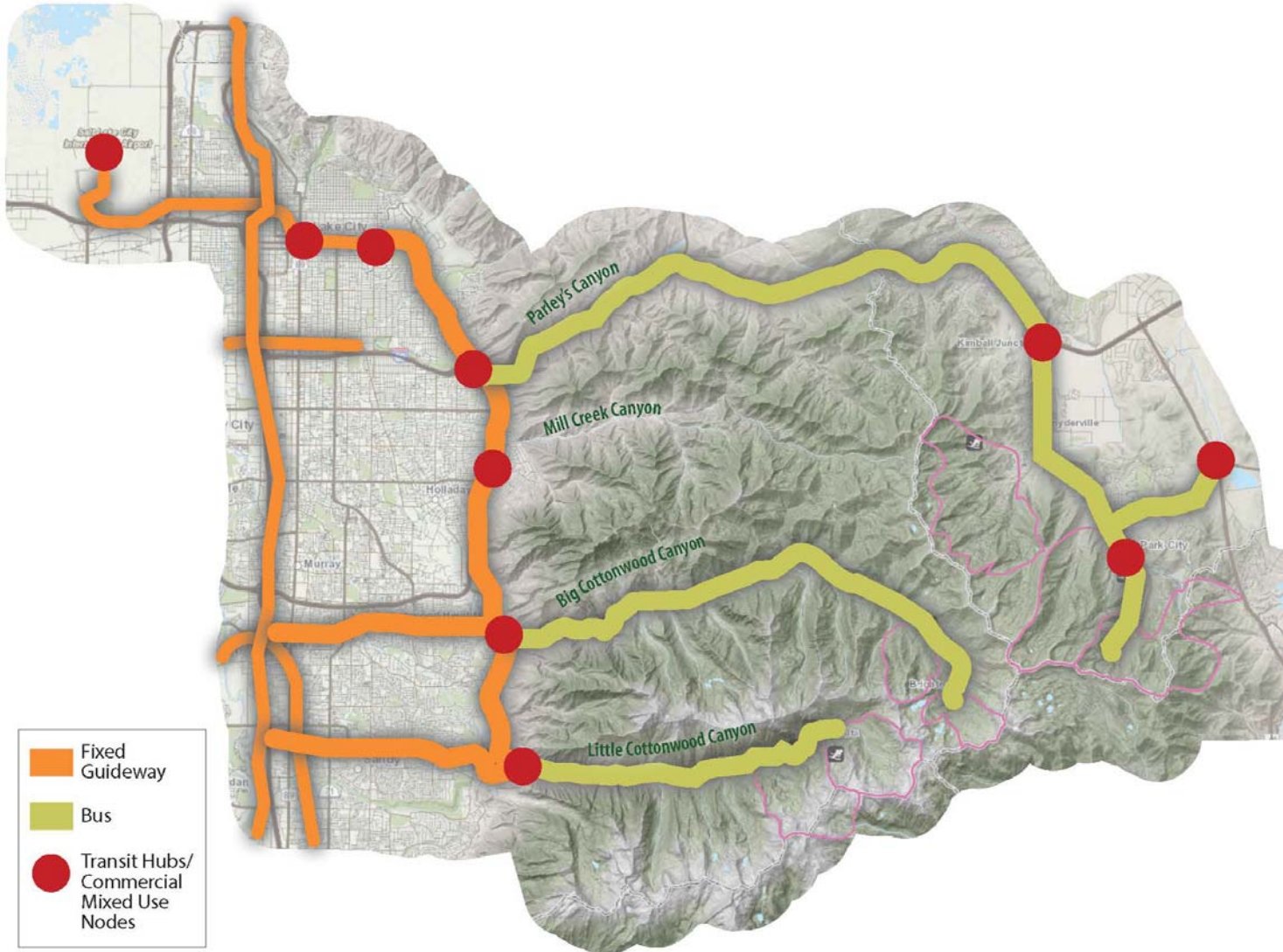


Interpretation of “A”



MOUNTAIN ACCORD

Option A-1

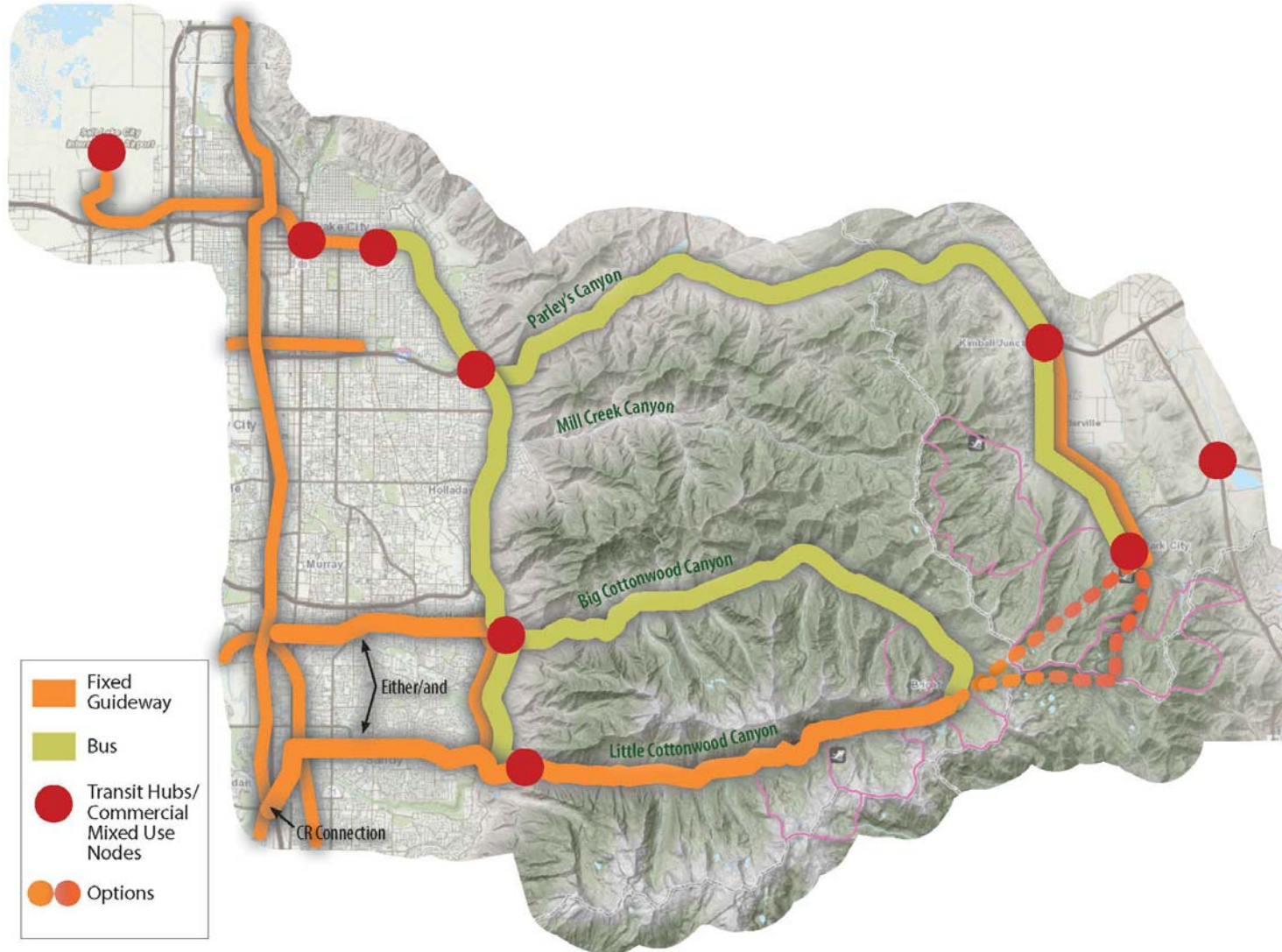


Interpretation of “B”



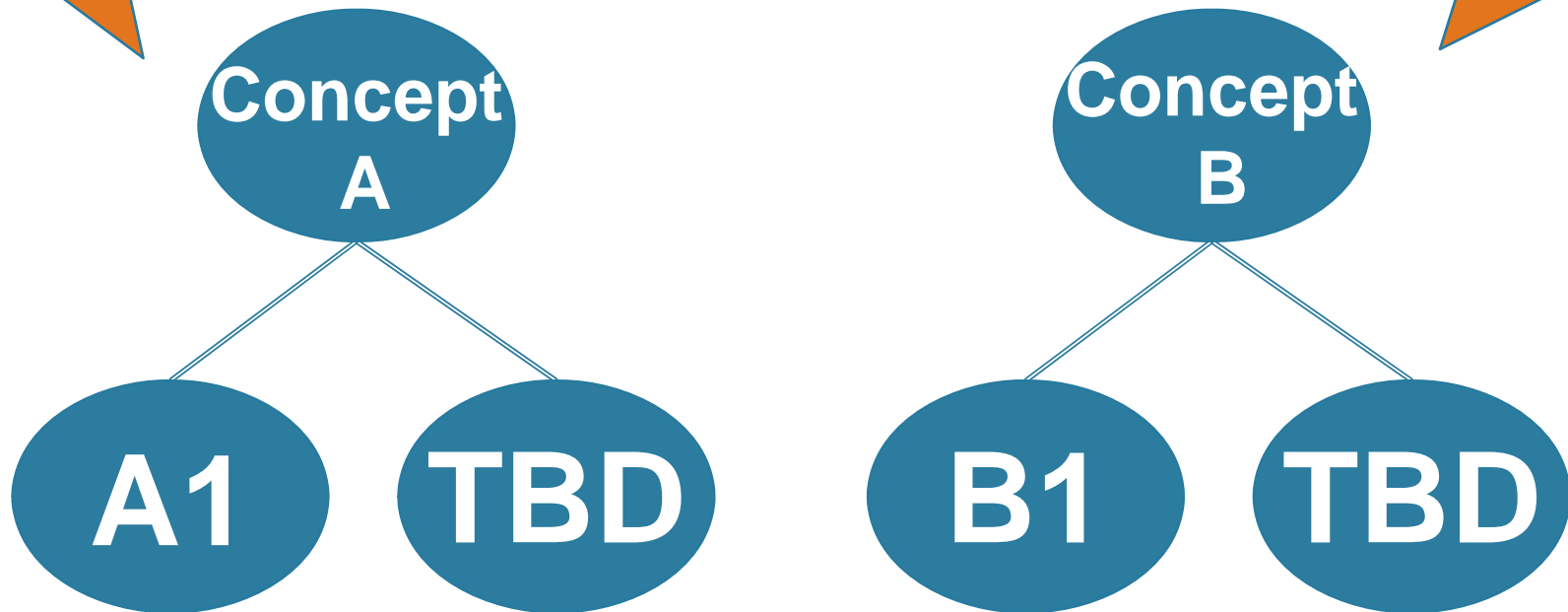
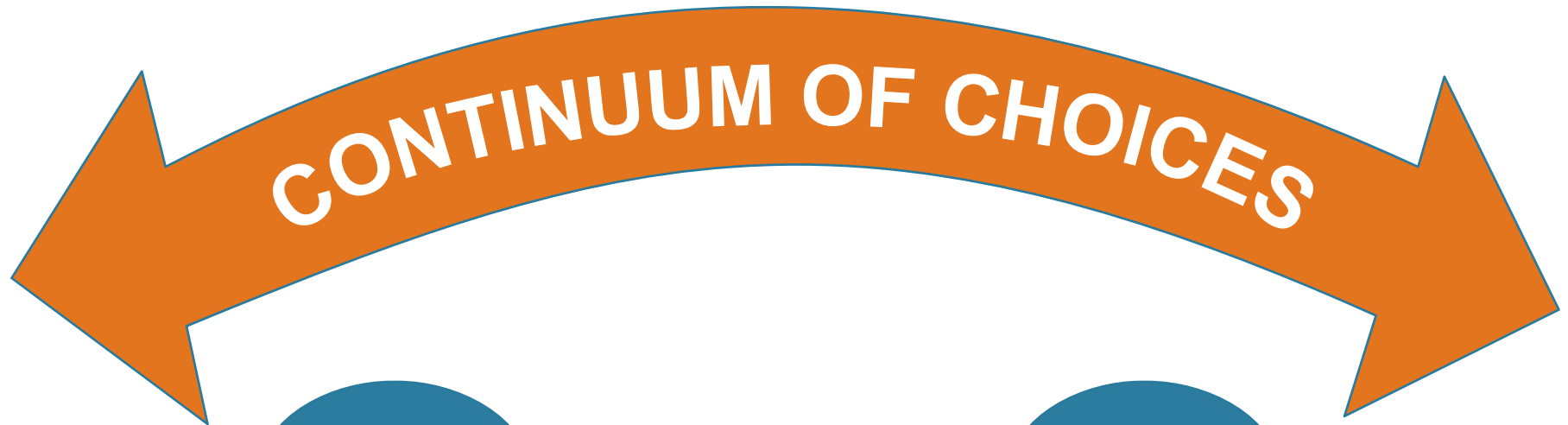
MOUNTAIN ACCORD

Option B-1





MOUNTAIN ACCORD

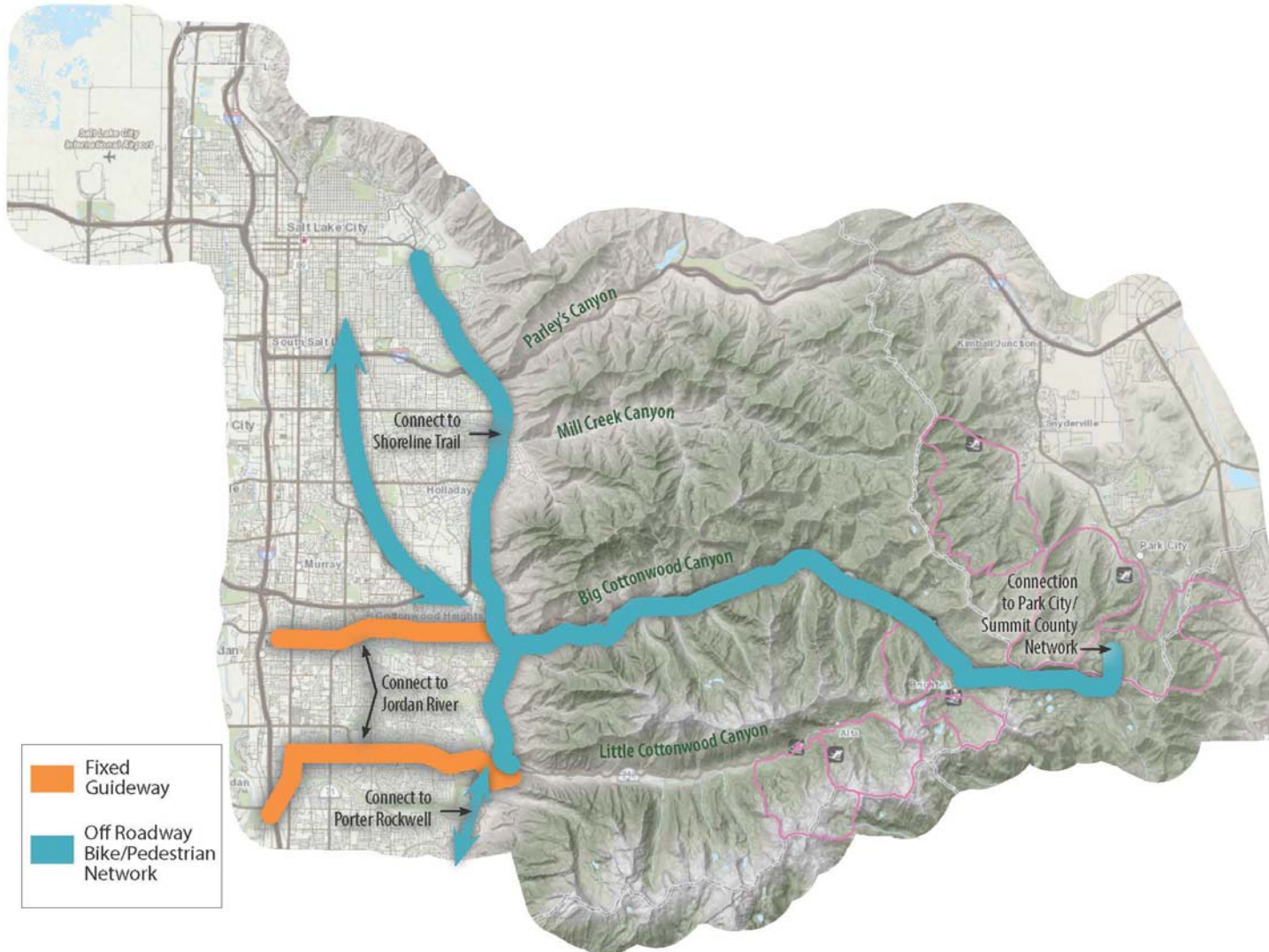


And a Possible “Constant” to all Outcomes



MOUNTAIN ACCORD

Common Improvements/Policies



Next...



MOUNTAIN ACCORD

- **We would like up to five scenarios for which the metrics can be applied – not**
- **Can edit/modify either A or B (four tables)**
- **Or, can create a new one (one table)**
- **Pick a spokesperson – we'll report back!**



Next Meeting (#7)



Wednesday, September 24th
Miller Business Resource Center
SLCC Miller Campus 9750 South 300 West

Begin Developing More Specific Idealized
Systems: Design Charrette #2