



MOUNTAIN ACCORD

Transportation System

Group Meeting #4

June 25, 2014



Meeting #4 Outcomes



1. Member Poll on Vision and Goals
2. Discussion of Metrics

Meeting #4 Agenda



1. Scenario Planning: Remaining Steps
2. Summary of other System Groups
3. Vision Statement: Discussion and Polling
4. Goals: Discussion and Polling
5. Metrics: Discussion
6. Action Items and Closing

Remaining Steps



Vision, Goals and Metrics (June, July)

Idealized Systems (Aug, Sept, Oct)

Design Features

Report Cards

Combined Scenarios and Preferred Scenario (Nov, Dec, Jan)

Process Overview

VISION GOALS METRICS

*Future Vision
Desired Outcomes*

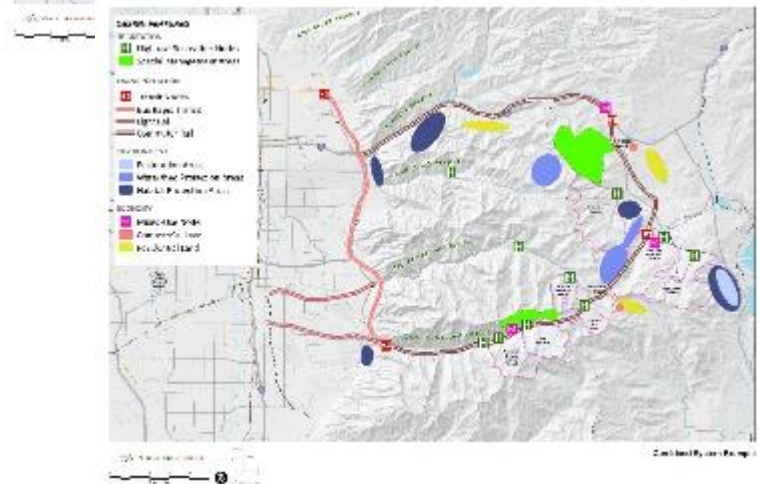
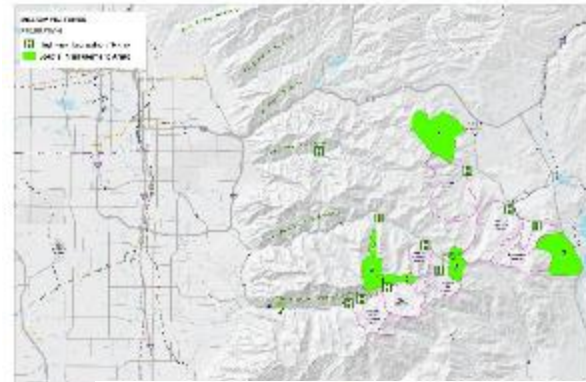
DESIGN IDEALIZED SYSTEM

*Design Features
Map-building charrettes
Apply metrics*

COMBINED & PREFERRED SCENARIO



*Combine systems
Apply Metrics
Refine, Review
Select*

Recreation			
<i>Goal: Provide recreation opportunities for an increasing number of users while maintaining backcountry experiences</i>			
Metric	Success Target	Existing Conditions	Idealized Scenario
<i>Number of high-use recreation nodes</i>	<i>4-nodes</i>	<i>1-node</i>	<i>5-nodes</i>
<i>Acres of land under social management</i>	<i>1,000 acres</i>	<i>500 acres</i>	<i>1,100 acres</i>

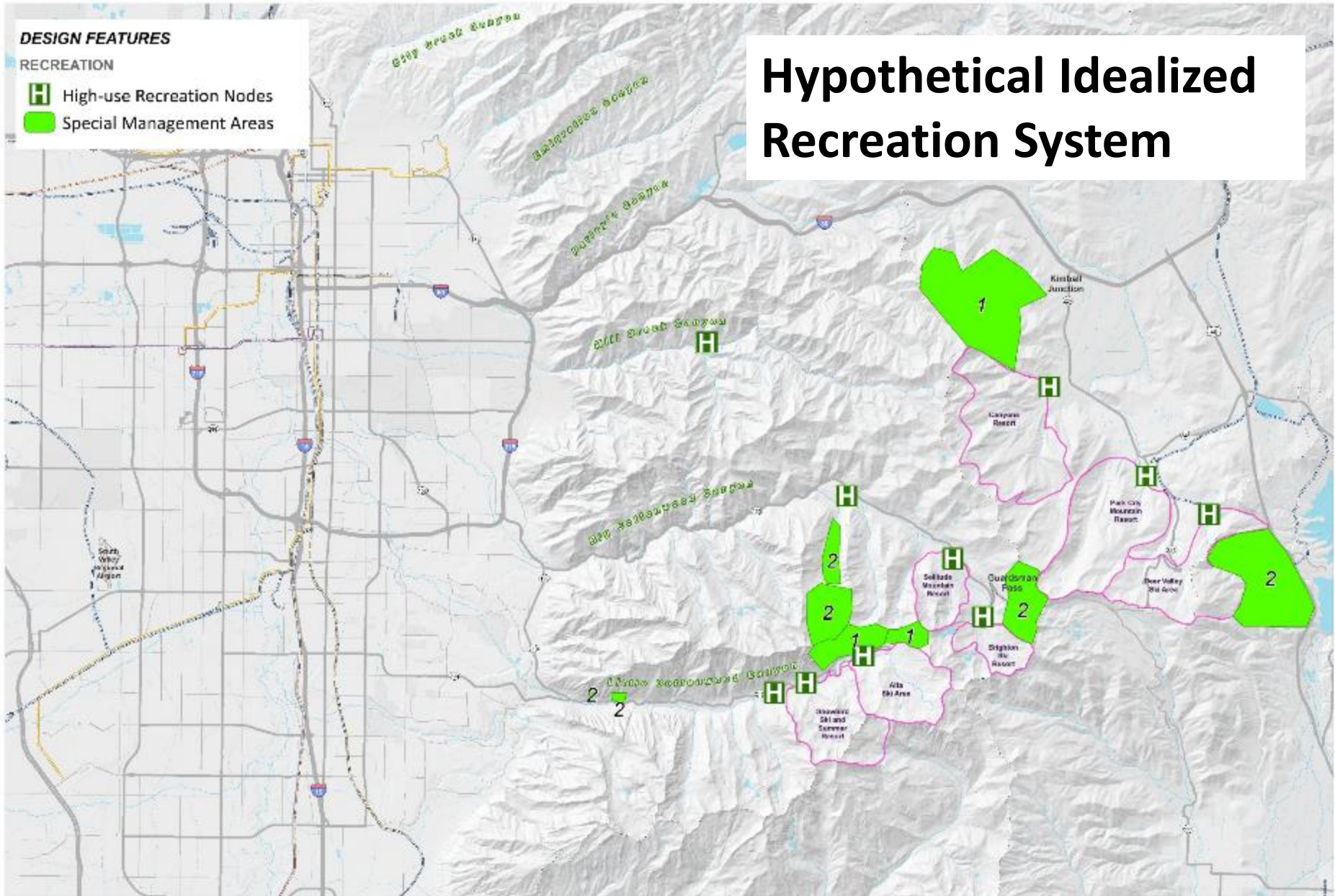


DESIGN FEATURES

RECREATION

-  High-use Recreation Nodes
-  Special Management Areas

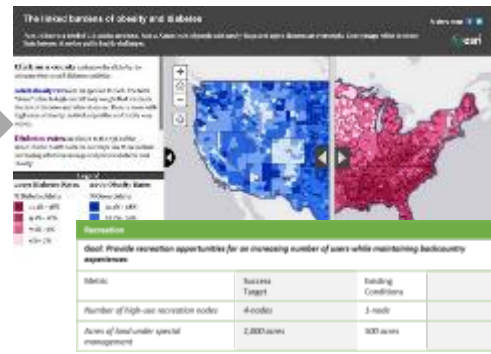
Hypothetical Idealized Recreation System



Developing Idealized Systems

- Review Existing Conditions maps and report cards
- Review suitability analysis
- Draw draft Systems using **Design Features**

1st DESIGN CHARRETTE (Aug)



Story Maps and Report Cards of Existing Conditions

Maps and report cards of all initial system designs



2nd DESIGN CHARRETTE (Sept)

- Review 1st Designs & Report Cards.
- Draw refined systems. Rescore.
- Prioritize

ArcGIS Online in the final charrette to refine designs and score Metrics live.



3rd DESIGN CHARRETTE (Oct)

- Review 2nd Designs
- Live design session
- Refine and rescore
- Poll on final Idealized System

Design Features - Transportation

Menu of concepts/actions to build System

- Large scale
- Spatial actions and policy actions
- Building blocks for “Idealized System”

Transportation Examples

- Transit Node (spatial)
- High Capacity Transit Corridor (spatial)
- Secure funding for avalanche mitigation (policy)



Example Report Card



MOUNTAIN ACCORD

Recreation

Goal: Provide recreation opportunities for an increasing number of users while maintaining backcountry experiences

Metric	Existing Conditions	Target	Idealized System A
<i>Number of high-use recreation nodes</i>	<i>1 node</i>	<i>4 nodes</i>	<i>4 nodes</i>
<i>Acres of land under special management</i>	<i>500 acres</i>	<i>1,000 acres</i>	<i>1,100 acres</i>

DESIGN FEATURES

RECREATION

- High-use Recreation Nodes
- Special Management Areas

TRANSPORTATION

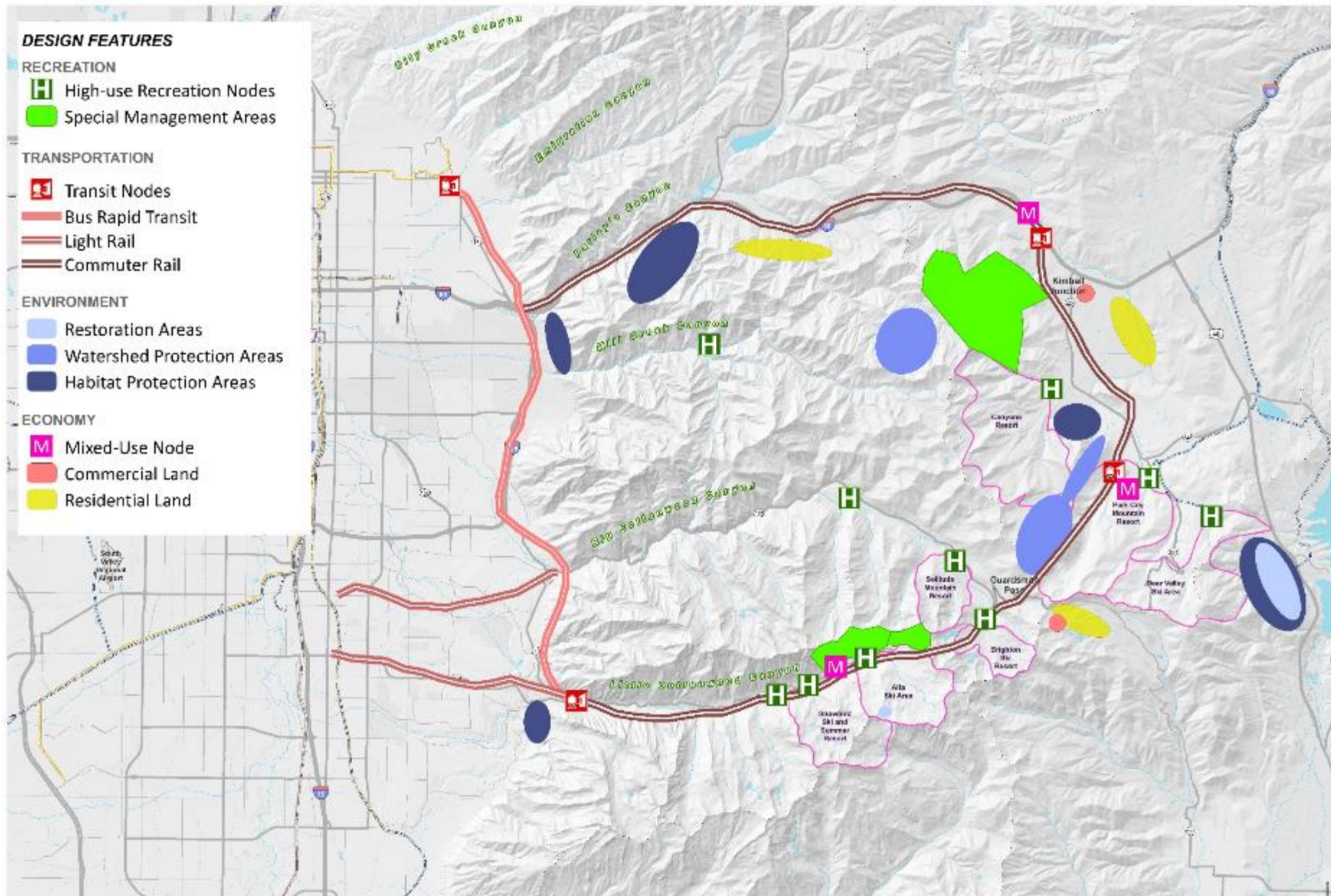
- Transit Nodes
- Bus Rapid Transit
- Light Rail
- Commuter Rail

ENVIRONMENT

- Restoration Areas
- Watershed Protection Areas
- Habitat Protection Areas

ECONOMY

- Mixed-Use Node
- Commercial Land
- Residential Land



Developing Combined and Preferred Scenarios

2-Day Workshop and charrette: range of 4 Combined Scenarios



DEVELOP COMBINED SCENARIOS (early Nov)

- Tech Leads
- Co-chairs
- Coord Comm
- Mgt Team

Review Combined Scenarios. Make refinements.



REFINE SCENARIOS (Nov-Dec)

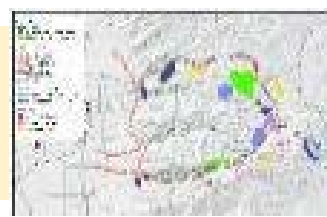
- Stakeholder Group
- Steering Committee
- Executive Board

30 day public review. Jan public open houses. 2 Exec sessions. Negotiation.



BROAD REVIEW AND INPUT (Dec-Jan)

- Public
- Other stakeholders
- Exec Board



PREFERRED SCENARIO (Jan 26)

- Exec Board adopts a Preferred Scenario

Vision: Transportation System Group



The Central Wasatch is a popular destination for residents and visitors alike and outdoor refuges are increasingly more valuable to the growing population and urban area. We meet the growing demand for access to and within the Central Wasatch Mountains through a dynamic and sustainable mountain transportation system that provides year-round transportation choices, improves safety and efficiency and is compatible with the unique environmental characteristics of the Central Wasatch.

Vision Poll



This Vision statement articulates the shared description of the desired long-term future state of the Transportation System.

1. Concur
2. Concur with minor point of contention
3. Disagree with outcome but consent to move forward
4. Dissent
5. Waive or Abstain

Goals



MOUNTAIN ACCORD

Goal 1: Provide competitive non-automobile transportation choices for resident and non-resident visitors

Goal 2: Ensure the transportation experience is reliable and facilitates a positive experience

Goal 3: Reduce as many safety hazards as possible

Goal 4: Minimize impacts to the natural and intrinsic values of the Central Wasatch

Goal 5: Parking experience is more consistent at high-use destinations

Goals Poll



These Goals state the specific desired outcomes of the Transportation System and if achieved represent the best ways to idealize the Central Wasatch and advance the System Group Vision.

1. Concur
2. Concur with minor point of contention
3. Disagree with outcome but consent to move forward
4. Dissent
5. Waive or Abstain

Metrics



Goal 1: Provide competitive non-automobile transportation choices for resident and non-resident visitor

Metrics:

- **Percent of trips to-and-from mountain destinations accommodated by alternate modes**
- **Hotel pillows within ¼ mile of public transit stops servicing key destinations**
- **Average trip time (minutes)**

Goal 2: Ensure the transportation experience is reliable and facilitates a positive experience

Metrics:

- **Number of annual days the system is susceptible to significant seasonal or weather-related delays.**
- **Is the transportation choice interesting and fun (1-5 Scale)**

Metrics continued...



Goal 3: Reduce as many safety hazards as possible

Metrics:

- **Number of days the system is susceptible to travel danger caused by natural hazards such as avalanches and rock slides.**
- **Number of current “high-accident locations” conditions.**

Goal 4: Minimize impacts to the natural and intrinsic values of the Central Wasatch

Metrics:

- **Transportation choice complements the natural environment and natural experience (1-5 Scale)**
- **Tons of vehicle emissions reduced**

Goal 5: Parking experience is more consistent at high-use destinations

Metrics:

- **Percent of parking utilization in Big and Little Cottonwood Canyons on peak days**
- **Predictability of parking as part of a trip (scale 1-5)**



Next Meeting (#5)

July 23, 9-11 am, location TBD

Outcomes for Meeting #5:

1. Agreement on Metrics
2. Design features for Idealized Systems