



MOUNTAIN ACCORD

# Recreation System Group

## Meeting #7

September 24, 2014



# Meeting #7 Agenda



1. Introduction
2. Presentations on important issues for Idealized Recreation System
  - a) USFS Forest Plan and Wilderness
  - b) Private Land Strategies
3. Mapping Exercise, Idealized Systems
4. Metrics Discussion
5. Central Wasatch Recreation Organization Discussion
6. Ski Utah One Wasatch Presentation
7. Action Items and Closing



MOUNTAIN ACCORD

# Preview of Other Idealized Systems





MOUNTAIN ACCORD



# Environment Idealized System





MOUNTAIN ACCORD

# Transportation Idealized System

Concept A



Concept AB



Concept B



# Economy Idealized System





MOUNTAIN ACCORD

# Preview of Final Idealized Systems Format





# Draft Idealized System Product



MOUNTAIN ACCORD

## Recreation – Idealized System DRAFT

The Recreation System Group's Idealized System defines the actions that would be necessary to achieve its vision by 2040.

Plans, Maps, and Metrics were approved in August, and are available for viewing here: <https://www.mountainaccord.com/recreation>, <https://www.mountainaccord.com/recreation>

### Vision

The recreation system in the Greater Boulder is balanced, sustainable, and provides a range of settings that accommodate increasing demand for year-round outdoor recreation opportunities while protecting wildlife, watersheds, and other biodiversity values. An encouraging atmosphere and high level of use at thoughtfully designed locations with convenient access.



Outdoor Goals - Outdoor Recreation	Outdoor Goals - High-Quality Habitat
<ul style="list-style-type: none"> <li>Secure wilderness exchanges in 2 areas to complete the Mountainous Mountain Trail</li> <li>Place 15 miles additional management to preserve recreation values</li> <li>Secure lands with recreation values for incorporation into the greater land management of the mountain front</li> <li>Establish 20 acres to be designed and managed for high levels of future recreation use which supporting a variety of activities and user groups</li> <li>Establish 20 acres to be designed and managed for increased use with balancing existing recreation and recreational opportunities</li> <li>Establish 10 miles of trail networks</li> <li>Provide year-round recreation routes along 17 corridors</li> <li>Establish 10 miles of trail networks</li> </ul>	<ul style="list-style-type: none"> <li>Establish 10 miles of trail networks</li> <li>Establish 10 miles of trail networks</li> <li>Establish 10 miles of trail networks</li> </ul>

Additional Goals - Policy Recommendations

Coordinate and foster cooperation to provide high level recreational planning, management, and public education.





MOUNTAIN ACCORD

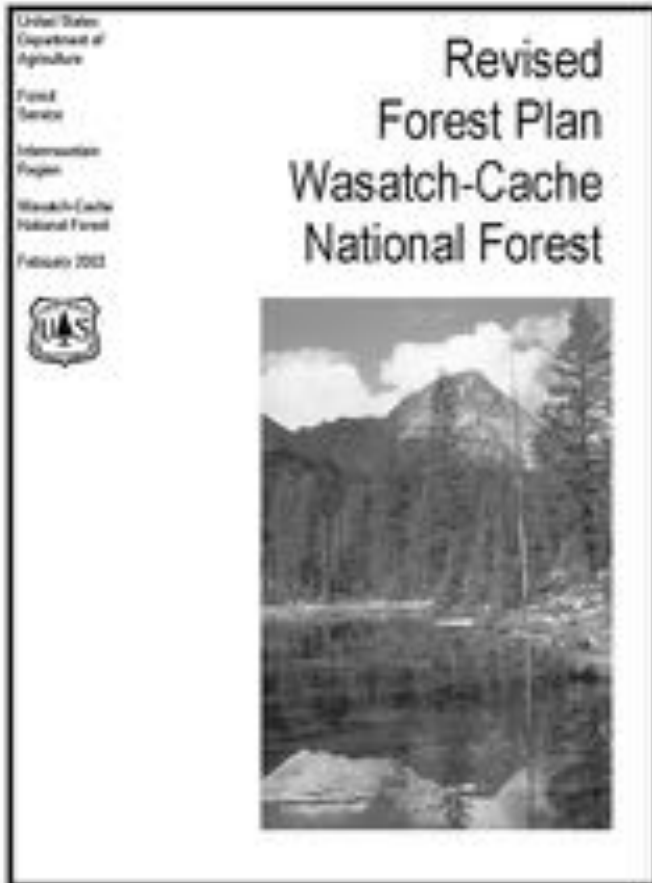
# USFS Forest Plan and Wilderness Presentation



# Forest Plan Implications



MOUNTAIN ACCORD



- Completed in 2003
- Guides all Resource Management Activities
- Sets Management Direction
- Describes Desired Future Conditions & Goals
- Establishes Standards and Guidelines
- Establishes Management Prescriptions

# KEY POINTS



1. Forest Plan Implementation
2. Management Prescriptions
3. Ski Area Permit Boundary Management
4. Parking Constraints
5. Wilderness Recommendations & Inventoried Roadless Areas
6. Watershed Protection





MOUNTAIN ACCORD

# 1. Forest Plan Implementation

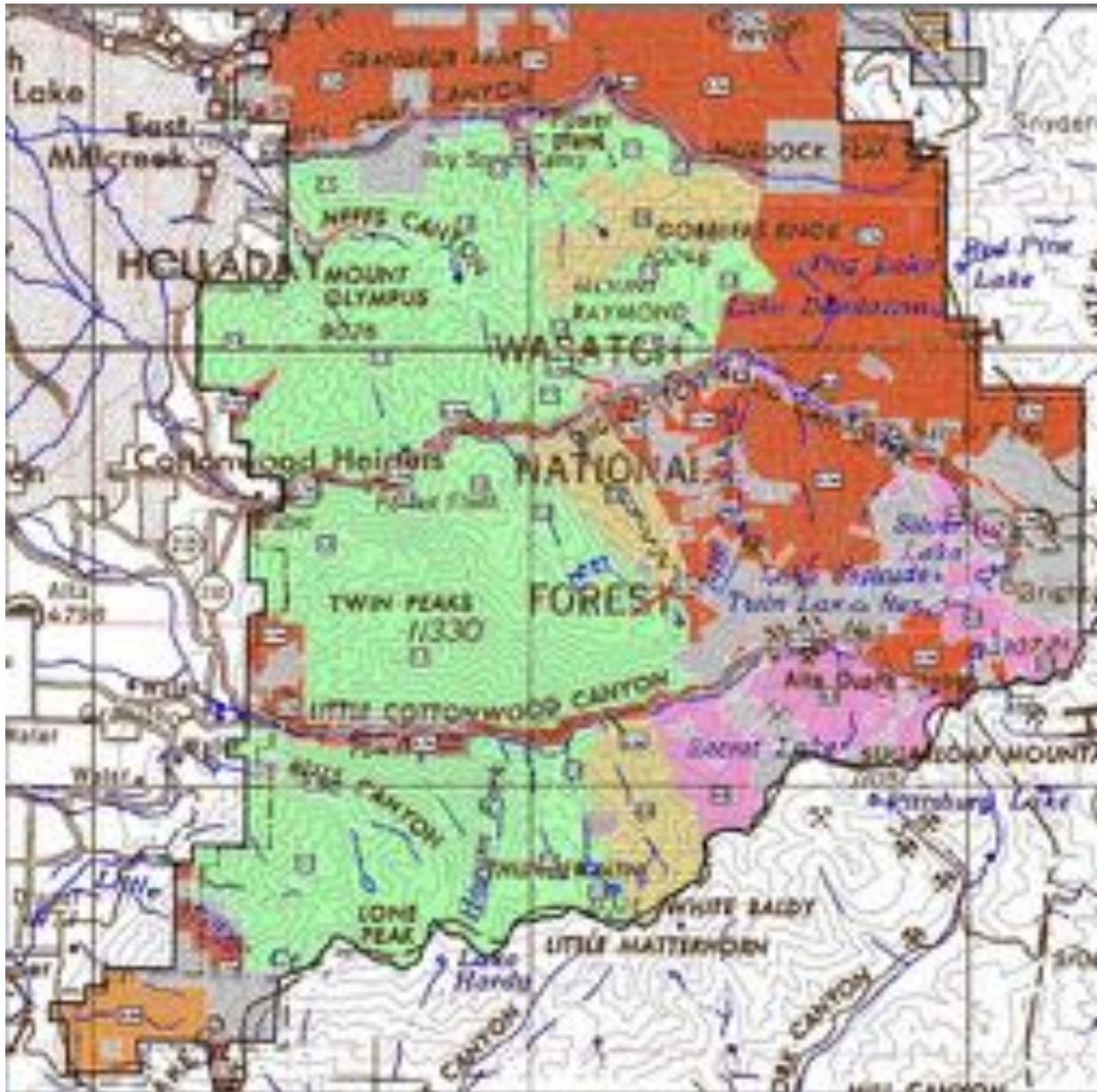
- The Forest Plan provides broad program-level direction for management of the land and its resources.
- Future projects carry out the direction in the Forest Plan.
  - Environmental analysis (NEPA) must be conducted for site-specific projects as they are proposed.
- **All projects must be consistent with the Forest Plan - *Standards & Guidelines (RHCA setbacks), Desired Future Conditions, & Management Prescriptions***
- **Adaptive Management** - Continuous assessment and planning – Forest Plans need to be dynamic to account for changed resource conditions – **may need amending** (through NEPA process)



MOUNTAIN ACCORD

## 2. Management Prescriptions

- Management Prescription Categories provide a general sense of the management or treatment of the land intended to result in a particular condition being achieved or set of values being restored or maintained.
- Zoning Concept



## MOUNTAIN ACCORD

**Prescriptions** – based on Emphasis/Focus Resource Areas

1. **Wilderness** (*none recommended*)
2. **Special Management Areas** (*2.6 Undeveloped Areas*)
3. **Protection, Maintenance or Restoration of Aquatic/Watershed or Terrestrial Integrity** (*3.1w Watershed Emphasis*)
4. **Multiple Resource Uses With Recreation Needs and Opportunities** (*4.5 Emphasis on Developed Recreation Areas*)





MOUNTAIN ACCORD

### 3. Ski Area - Backcountry

- The Revised Plan allows no expansion of current ski area permit boundaries into adjacent highly valued undeveloped areas in winter; and in summer for nature-based recreation opportunities complementary to resort facilities. Small admin. boundary changes allowed.
- Helicopter skiing will continue to operate as a component of the recreation picture in the Central Wasatch.
- Helicopter skiing and ski mountaineering will continue to compete for untracked conditions, and those users seeking quiet in the winter backcountry may continue to object to helicopter skiing in preferred terrain.



MOUNTAIN ACCORD

## 4. Parking Constraints

- Protection of watershed conditions will be a primary factor in managing roads, trails and access. In the Tri-canyon area parking capacities of canyon parking lots will be not exceed 2000 levels unless modification is needed for watershed protection or to facilitate mass transit.
- The Forest Service will work actively with other parties to explore options for reducing private vehicular use within these Canyons.

# 5. Wilderness Recommendations & Inventoried Roadless Areas



- The Tri-Canyon area has three designated wilderness areas - Mt. Olympus, Twin Peaks and Lone Peak
- No additional wilderness recommended in Tri-Canyon area
- The Tri-Canyon area has four inventoried roadless areas - Lone Peak, Mount Aire, Mount Olympus, and White Pine





MOUNTAIN ACCORD

## 6. Watershed Protection

- The underlying premise of resource management in this Management Area is the need to provide long-term, high quality culinary water to the large urban population of the Salt Lake Valley.
  - Decisions responding to increasing recreation demands will give first consideration to desired water quality and riparian conditions, and the limited wildlife habitat here.
  - Providing quality recreation opportunities within the framework of watershed protection will be an increasing challenge as the Wasatch front population and national and international destination use of the area continues to grow.
  - Continued coordination and cooperation among federal, state, and local government agencies, residents, businesses, and the recreating public will be imperative in order to meet these growing demands.

# QUESTIONS?



MOUNTAIN ACCORD





MOUNTAIN ACCORD

# Wilderness & Other Protections

*Sharon Seim  
Wilderness Program Manager  
Intermountain Region, Forest Service*



# Wilderness Management



## Preserve wilderness character

- Untrammeled
- Undeveloped
- Natural
- Outstanding Opportunities
- Other Features of Value

Ensure an enduring wilderness resource

# Prohibitions



MOUNTAIN ACCORD

- Roads
- Motorized Equipment
- Mechanical Transport
- Commercial Enterprise
- Structures and Installations

# Manageability - Boundaries



*“Avoid conflict with ... public uses outside the boundary that might result in...nonconforming structures and activities in the wilderness.”*

- Consider size, shape
- Avoid irregularities, edges (cherry stems)
- Consider nexus to external influences

# Statutory Protections



- Wilderness designation
- National Monument
  - At least one nationally significant resource
  - Landmarks, structures, or other objects of historic or scientific interest
- National Recreation Area
  - Addresses unmet outdoor rec needs – primary resource
  - Provides broad recreational spectrum (urban, primitive)
  - Managed for higher carrying capacity than wilderness



# National Rec Area (cont.)



- Local and individual focus
- Considers State/regional/local plans
- Improves quality of life (attract migrants, visitors)
  
- Less restrictive/more flexible than wilderness
- Could reduce opportunities for broader economic development
- Legislation typically does not include funding

# Administrative Protections



- Forest plan
- Other planning effort
  - Could include local controls (ordinances, zoning)
  - Opportunity for broader stakeholder buy-in
- Wilderness recommendation



MOUNTAIN ACCORD

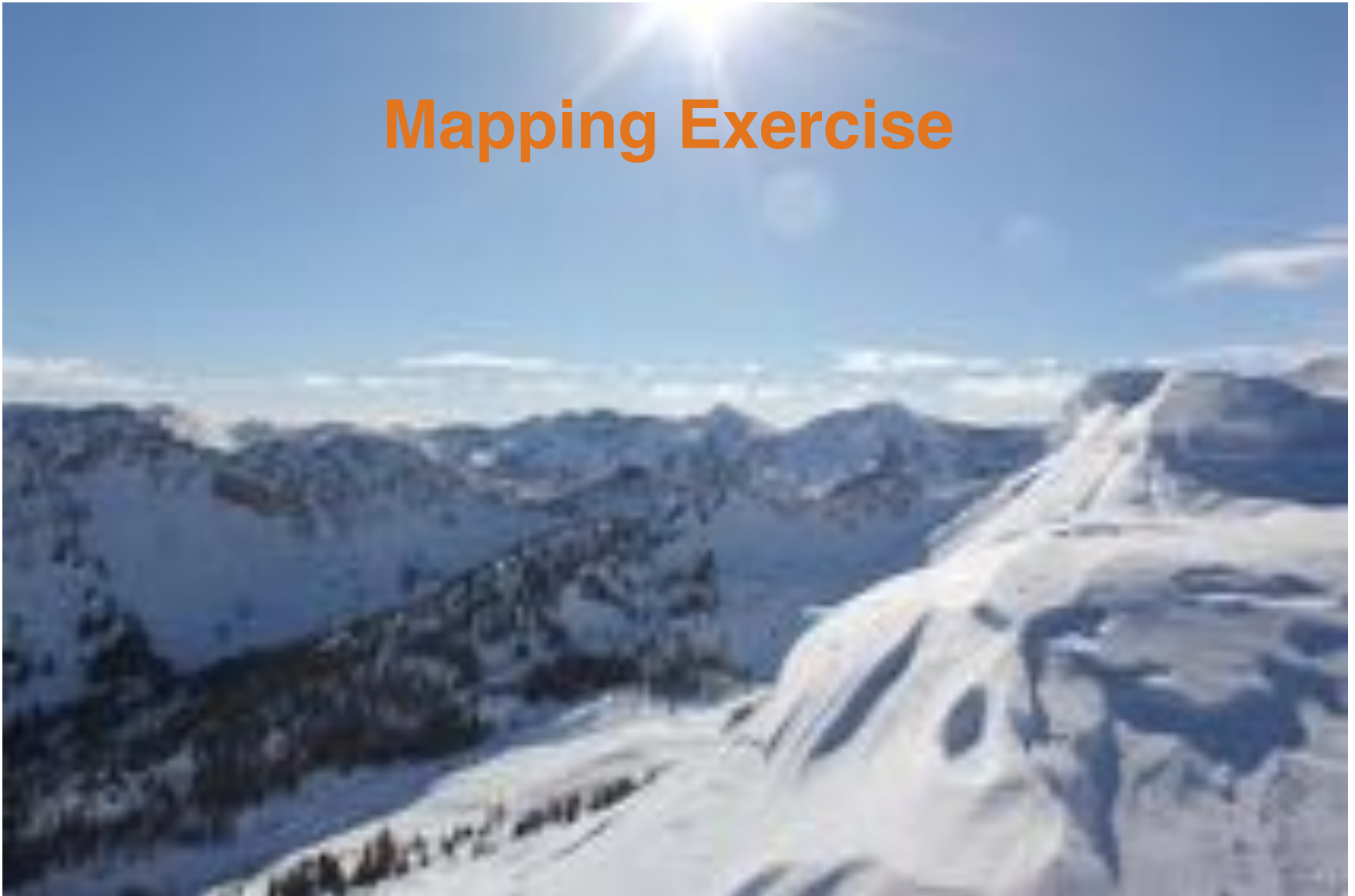
# Private Land Strategies Presentation





MOUNTAIN ACCORD

# Mapping Exercise





# Progress since System Group Meeting #6

- **Revisions to idealized system map**
  - Implemented more-specific design ideas from mapping exercise
  - Added/modified areas to preserve recreation character
  - Revised approach for land preservation and public access
  - Added area of disagreement regarding ski resort expansion
- **Discussion at last meeting not carried forward**
  - Additional transit-based nodes
  - High use areas between the mountain resorts
  - Other moderate use nodes



# September 11<sup>th</sup> Workshop

## Discussion Topics



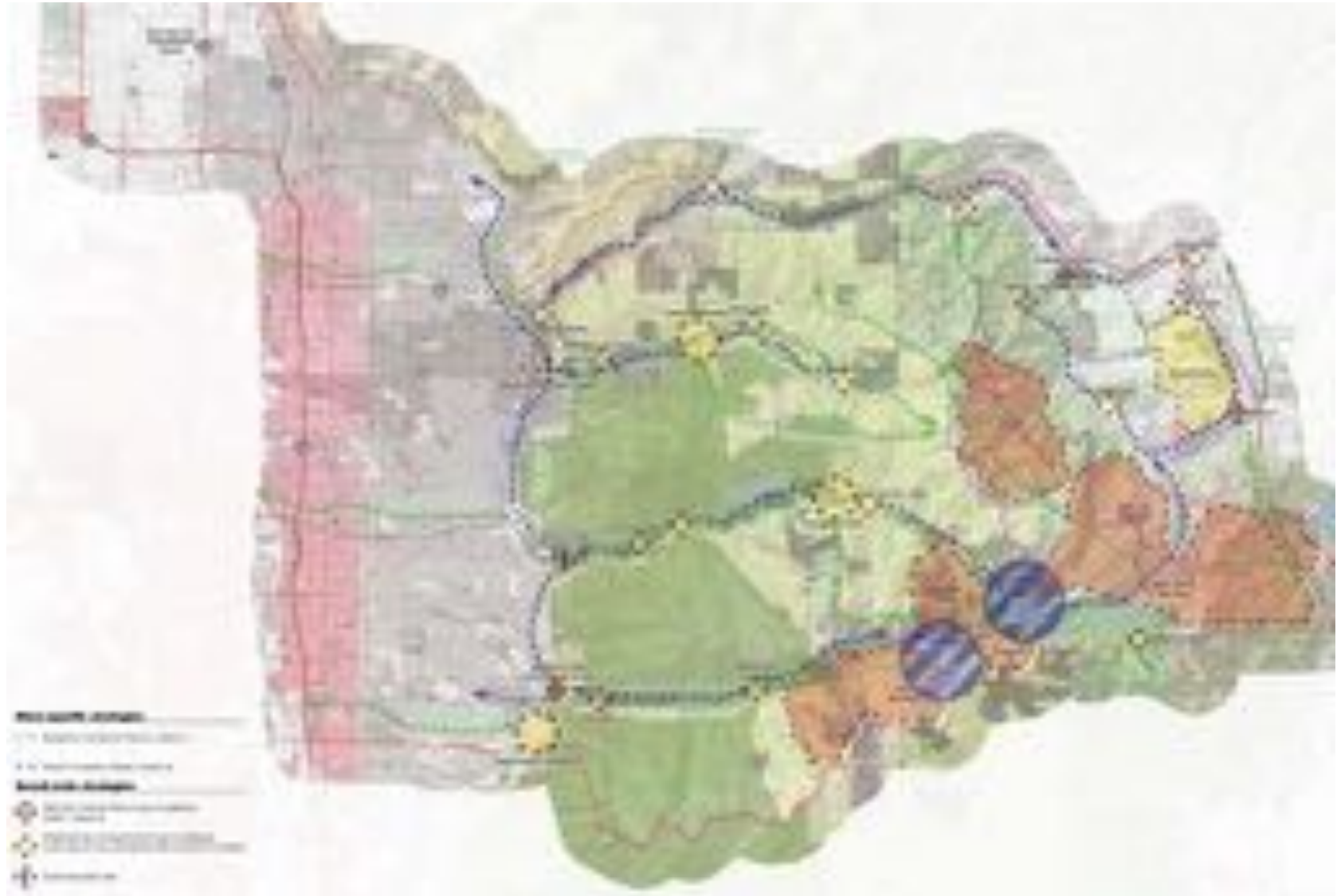
- **Recreation and Transit Connections**
  - Additional trail connections including north-south trail between canyons
  - Transit connection between the resorts
- **Land Management**
  - Wilderness trades to complete Bonneville Shoreline Trail
  - Additional protection for federal lands
  - Recreational land preservation strategies
- **Refined Metrics**
- **Central Wasatch Recreation Organization**
  - Roles and funding



# Recreation Connections



MOUNTAIN ACCORD



# Transportation Mode Summary



Mode	Operating Hours	Weather Operations	Luggage/bikes	ADA Accessibility
Bus	All hours possible	Similar to automobile	Yes	Yes
Rail	All hours possible	No Limitations	Yes	Yes
Aerial	All hours possible	Limited by wind, electrical storms	Yes	Yes
Ski Lift	Daylight hours	Limited by wind, electrical storms	Luggage no/bikes yes	No



# Objectives for Mapping Exercise: Recreation Connections



- Have we identified the recreation **connections** (trail connections or improvements) **and nodes** that are **critical to achieving our vision** and the success of the recreation system in the future?
- Have we identified where **transportation service and connections** should be provided **to achieve our vision** for the recreation system?



# Land Management



MOUNTAIN ACCORD



# Objective for Mapping Exercise: Land Management



- What **land management strategies** are desirable for the **federal lands** we have identified as important for **preservation**?
- Are there other areas of **Wilderness** that would be desirable?





MOUNTAIN ACCORD

# Metrics Discussion





# Updated List of Metrics



MOUNTAIN ACCORD

- Number of high use nodes
- Variety of user level types (casual, active, committed) served at high use nodes
- Variety of uses offered at high use nodes
- Implementation of management strategies to preserve areas for recreational opportunities
- Number of desirable trail connections completed
- Degree of trail system quality based on 6 qualitative components
- Number of key areas where public access has been obtained
- Compatibility of the recreation setting with the planned level of use (high, moderate, or low) based on 4 qualitative components
- Number of participating and funding agencies in Central Wasatch recreation organization
- Annual recreation budget for a Central Wasatch recreation organization



# U

# t of Metrics

- nodes
- types (casual, active, at high use nodes
- ed at high use nodes
- management strategies for recreational opportunities
- e trail connections completed
- m quality based on 6 quantitative
- s where public access has been
- l of transit service with
- Number of participating and funding agencies in Central Wasatch recreation organization
- Annual recreation budget for a Central Wasatch recreation organization



MOUNTAIN ACCORD



# Metric Scoring



MOUNTAIN ACCORD

Recreation				
Item	Units	Existing Condition	Desired Outcome	
Goal: Identify and establish high use areas to focus where future growth in recreation occurs				
Number of high use areas	Nodes	██████████	██████████	
Goal: Provide special unique recreation areas and settings to maintain opportunities for wildlife and fisheries				
Availability of various management strategies to provide area for recreational opportunities	Points	██████	██████	
Goal: Provide well designed, appropriately managed, well signed, and monitored trail network that meets demand and/or user expectations				
Number of desirable trail connections completed	Connections	██████████	██████████	
Goal: Pursue the most appropriate and feasible means of securing legal public access to critical recreational opportunities while mitigating conflicts on privately owned lands				
Number of key areas where public access has been acquired	Acres	██████████	██████████	
Goal: Establish appropriate level of services and designed settings in harmony with the desired recreation experience				
Compatibility of level of service with the desired recreation character	Points	██████	██████	
Goal: Establish an organization, with authority to act and/or with public support, that fosters long term success of the Central Wasatch Mountain System by promoting collaborative and unified management, user education, and protection of ongoing funding for continued system maintenance, evolution, and management				
Number of participating agencies with authority to act and the means to provide and secure ongoing funding (e.g., U.S. Forest Service, Salt Lake City, Wasatch County, etc.)	Points		Participation ██████████	Participation ██████████
			Providing Funding ██████████	Providing Funding ██████████



MOUNTAIN ACCORD

# Central Wasatch Recreation Organization





# Central Wasatch Recreation Organization



MOUNTAIN ACCORD

- What role should the organization have?
  - Planning
  - Funding
  - Maintenance/management
  - Infrastructure investments
  - Education (stewardship and wayfinding)
  - More?
- What groups should participate in this organization?
- How should it be funded?
- How should the organization be different than current partnerships (Wasatch Legacy Project)?







MOUNTAIN ACCORD

# Ski Utah – One Wasatch



# Next Meetings



## **Final System Group Meeting (#8)**

October 29<sup>th</sup> from 1:30 to 3:30 p.m.

Sandy City Hall

10000 Centennial Pkwy, Sandy, UT

### Outcome for Meeting #8:

- Approval of Idealized System

## **Stakeholder Meeting, Idealized Systems**

October 14<sup>th</sup> 3pm

Salt Lake City Library