



MOUNTAIN ACCORD

Consulting Team Update

May 29, 2014



Where we've been...



- System Group Meeting #1: Intro and Existing Conditions
- System Group Meeting #2: Existing Conditions and Future Trendlines
- System Group Meeting #3: Vision and Goals
- Stakeholder Meeting: Existing Conditions and Future Trendlines

Where we're heading...



- System Group Meeting #4 June 24/25: Goals and Metrics
- System Group Meeting #5-?: Idealized Systems
- Fall: Combining Idealized Systems
- January 2015: Finalized Preferred Scenario

Where are we in process?



MOUNTAIN ACCORD

We are here



Existing Conditions						
	Trendlines					
		Vision/Goals/Metrics				
				Idealized Systems		
1 (March)	2 (early April)	3 (late April)	4 (May)	5 (June)	6 (July)	7 (Aug)



= discuss draft information

= discuss revised info and poll group on recommendation(s)

Mountain Accord Modeling



MOUNTAIN ACCORD



May, 2014

Outline



MOUNTAIN ACCORD

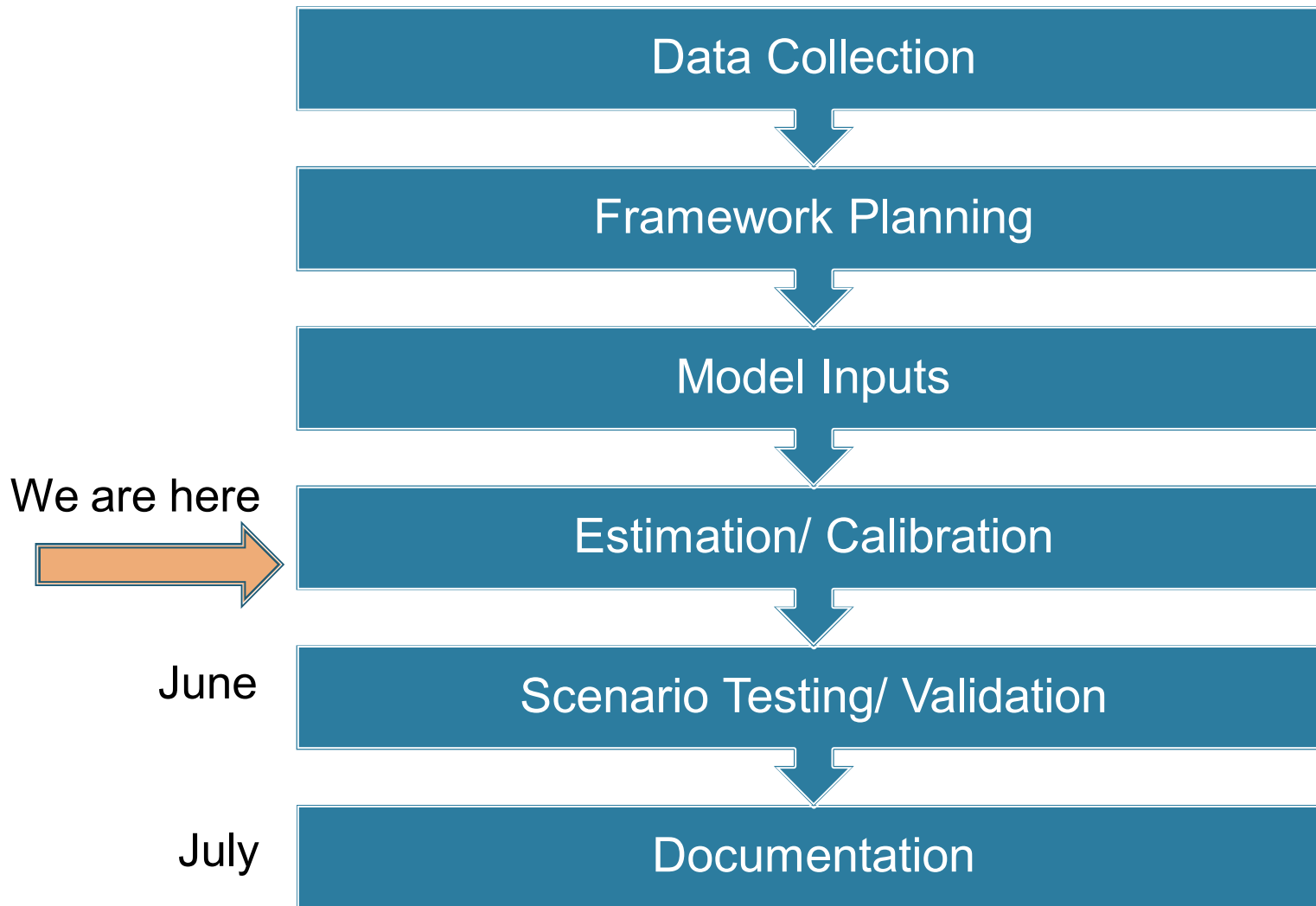
- Process
- Geography
- New model sensitivity
- Land use attributes
- Unique data sources



Schedule



MOUNTAIN ACCORD



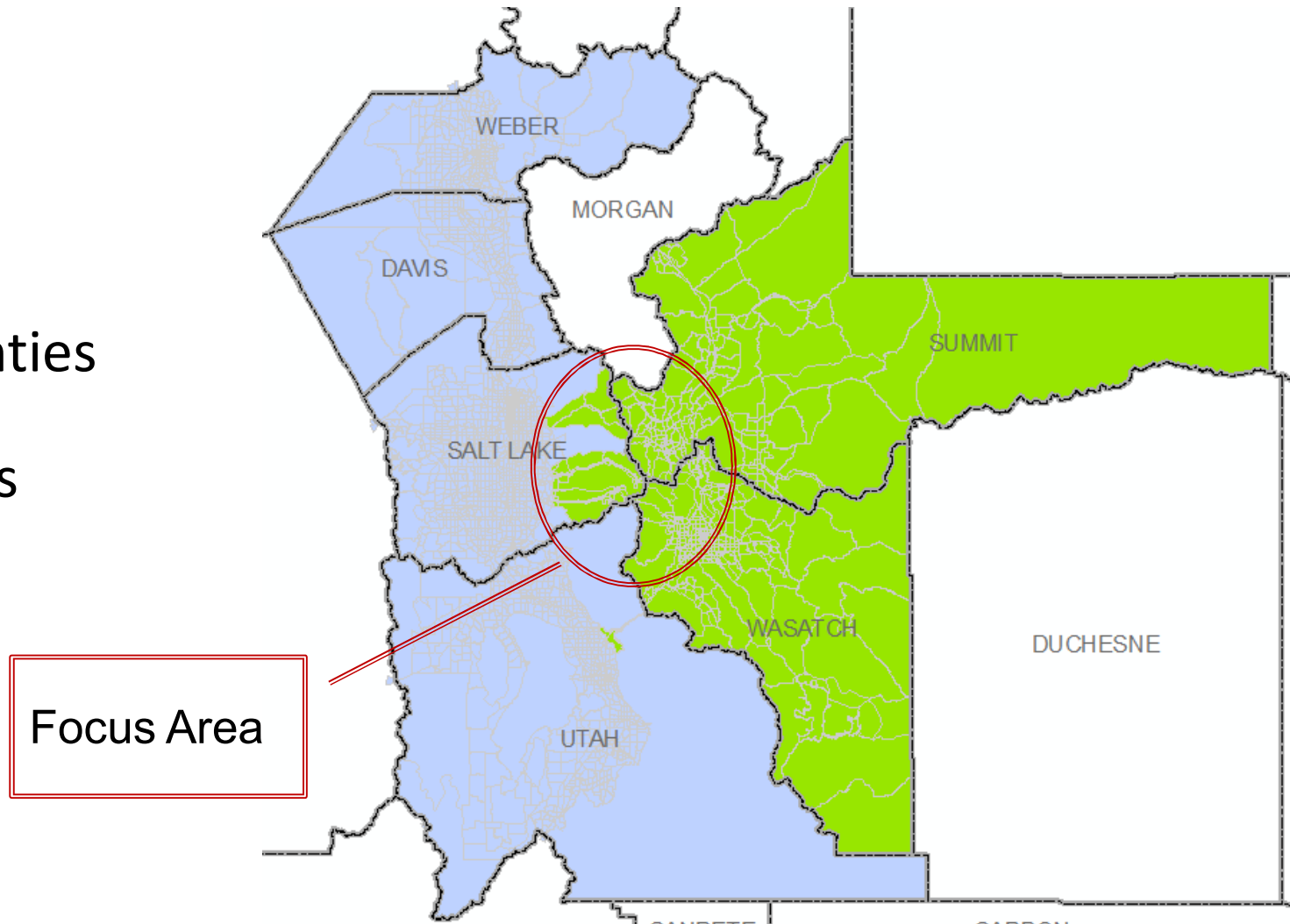
Geographic Expansion



MOUNTAIN ACCORD

Adding:

- 550 TAZs
- Two counties
- Roadways
- Transit





MOUNTAIN ACCORD

New model sensitivity: Recreational travel market

- Specific to mountain-oriented activities
- Attractions are ski areas, trailheads, destinations with parking
- Tailor distribution to reflect seasonal trends



MOUNTAIN ACCORD

Recreational travel market: Skier activity

- Local vs destination skier trips
- Ski tourism trends
 - Resident participation
 - Growth in destination tourism
 - Airport volume
 - Lodging



MOUNTAIN ACCORD

Land use attributes

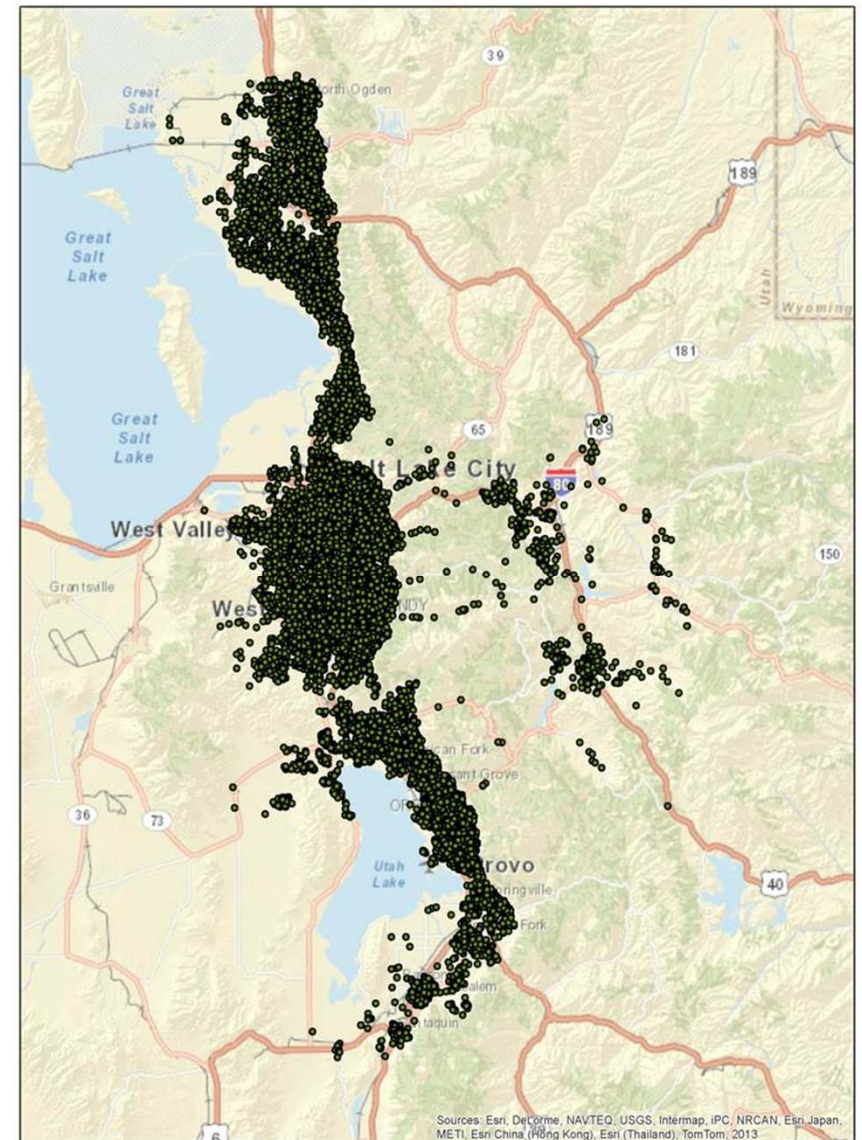
- Trail heads & parking capacity
- Hotels
- Ski areas & skier capacity
- Housing occupancy
- 2011 & 2040 population, employment, households, demographics



MOUNTAIN ACCORD

Data sources

- Utah skier survey
- Season pass holder zip codes
- Utah household travel survey
- AirSage origin-destination data





MOUNTAIN ACCORD

Project Team

- Jonathan Larsen, WFRC
- G.J. LaBonty, UTA
- Mike Wallace, Fehr & Peers
- Kyle Cook, Fehr & Peers
- Lawrence Liao, Cambridge Systematics